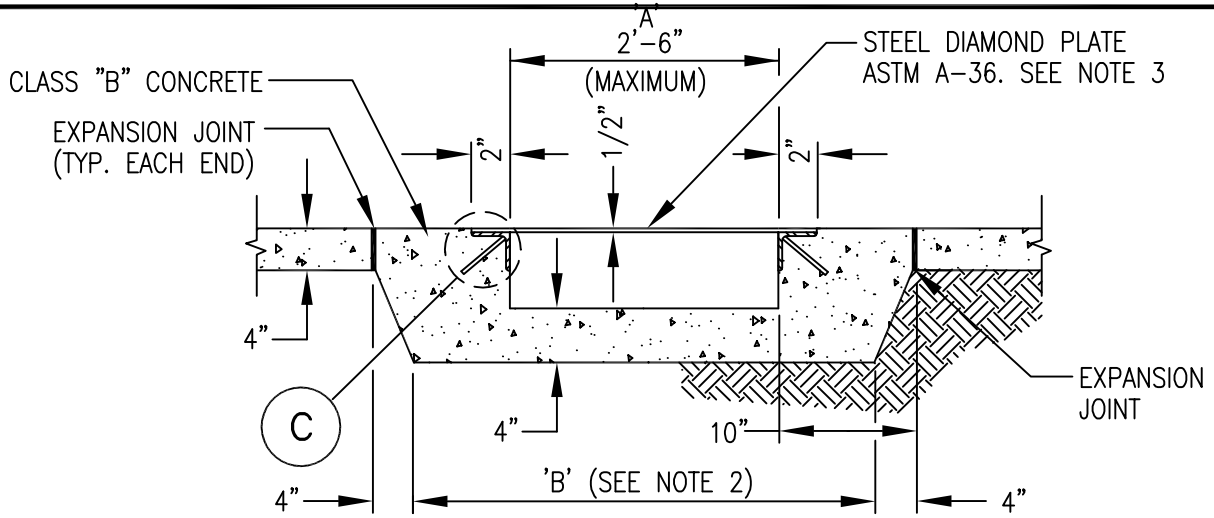
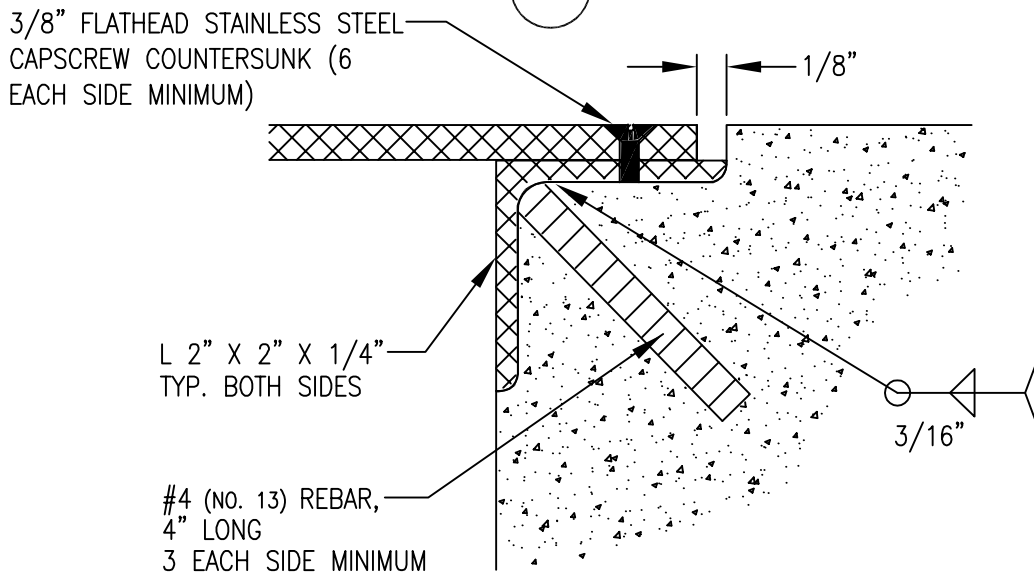


PLAN VIEW



(A) SECTION



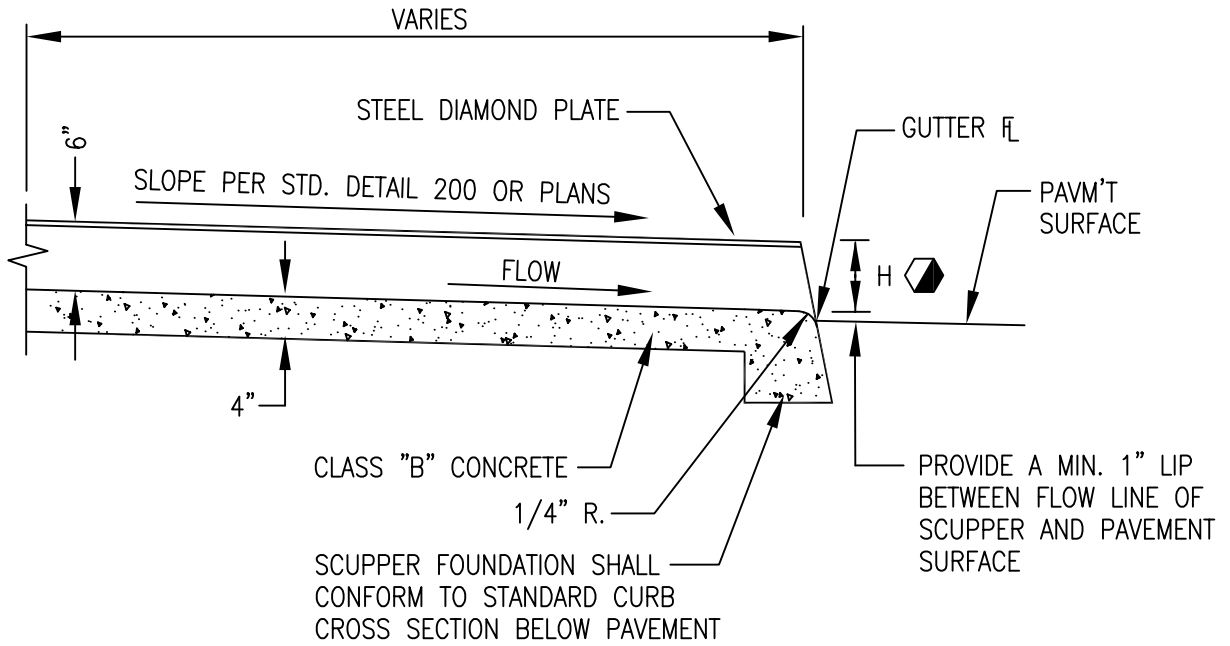
(C) DETAIL

NOTES:

1. (—) INDICATES DIRECTION OF FLOW.
2. DIMENSION 'B' EQUALS 'A'+1'
3. STEEL DIAMOND PLATE SHALL BE GIVEN ONE SHOP COAT OF PAINT NO.1 PER STD. SPEC. SECTION 1002. EXPOSED METAL SHALL BE PAINTED WITH TWO COATS OF SSPC PAINT NO. 5 PER STD. SPEC. SECTION 1002.
4. H EQUALS CURB FACE HEIGHT.
5. FOR CURB AND GUTTER, USE 2' TRANSITIONS TO VERTICAL CURB.
6. FOR MULTIPLE SCUPPERS PROVIDE 4" BETWEEN ADJACENT PANELS OF STEEL DIAMOND PLATE. INTERMEDIATE POSTS FOR BARRICADE RAILINGS SHALL BE PLACED MIDWAY IN 4" AREA BETWEEN ADJACENT PANELS.
7. STEEL DIAMOND PLATE SHALL BE DELIVERED AS ONE PIECE, CONFORMING TO THE REQUIRED SCUPPER DIMENSIONS. PLATES SHALL NOT BE SPLICED.




DETAIL NO.	STANDARD DETAIL	ISSUED:
205	SIDEWALK SCUPPER (TYPE 2)	10/88
SHEET 2 of 3		REVISED:
		7/02



(B) SECTION

⬡ "H" DIMENSION TO BE NOTED ON PLANS OR ESTABLISHED IN THE FIELD

	DETAIL NO.	STANDARD DETAIL	ISSUED:
	205	SIDEWALK SCUPPER (TYPE 2)	10/88
	SHEET 3 of 3		REVISED:
			7/02